



Funded by the European Union



NATIONAL AGENCY FOR ENERGY CONSERVATION
ANME

A sustainable and renewable engagement

Hosted by



MEETMED
WEEK

22 – 24 APRIL 2024
HAMMAMET – TUNISIA

In partnership with



الوكالة الوطنية لتطوير
استخدام الطاقة وترشيده

meetMED

Mitigation Enabling Energy Transition in the MEDiterranean region

The European Union Initiative Covenant of Mayors for the energy transition of Municipalities, the Italian experience

A. Federici – P. Pistochini – F. Cignini
ENEA Energy Efficiency Department



Italian National Agency for New Technologies,
Energy and Sustainable Economic Development

22 April 2024

Hammamet, Tunisia



RCREEE

Regional Center for Renewable Energy and Energy Efficiency
المركز الإقليمي للطاقة المتجددة وكفاءة الطاقة

www.meetmed.org

meetMED

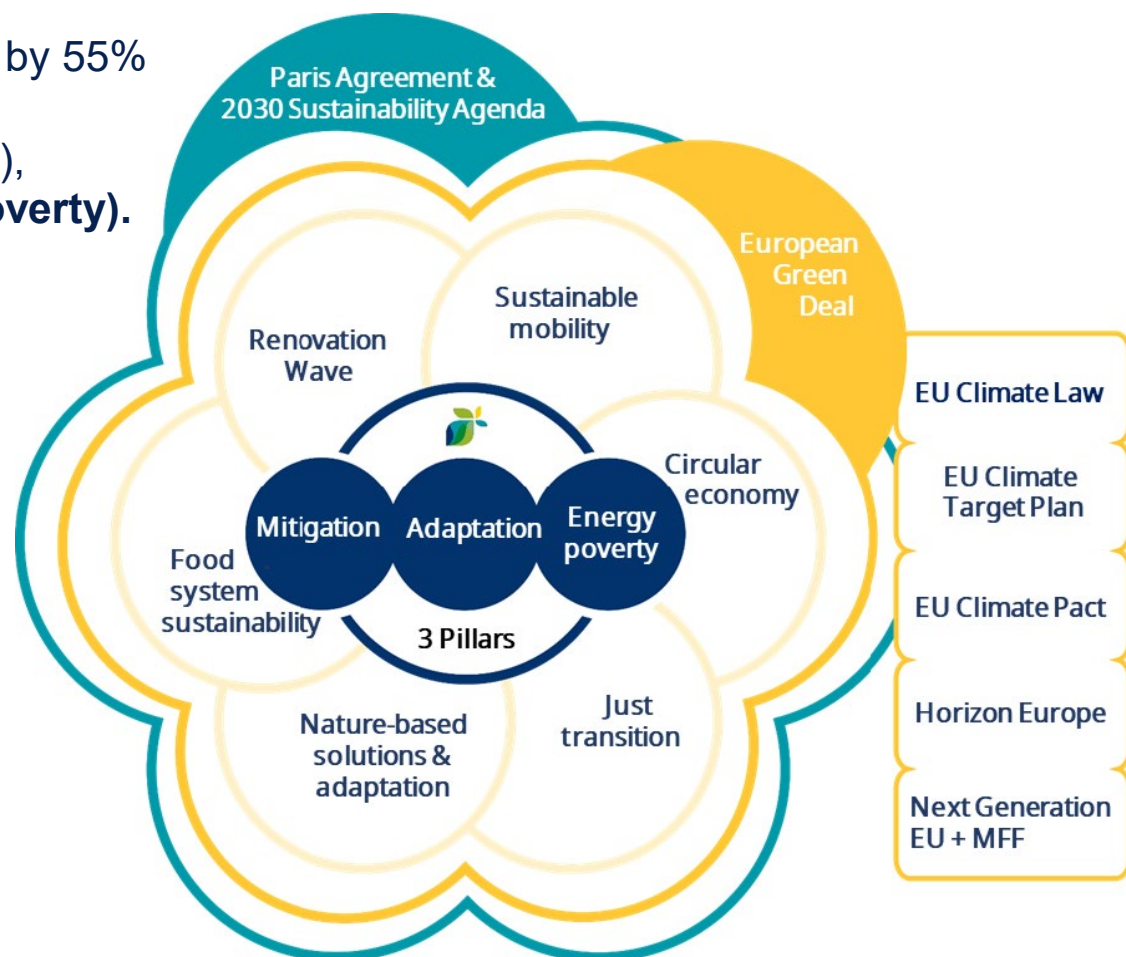
Phase II

Covenant of Mayors for Climate and Energy (CoM)

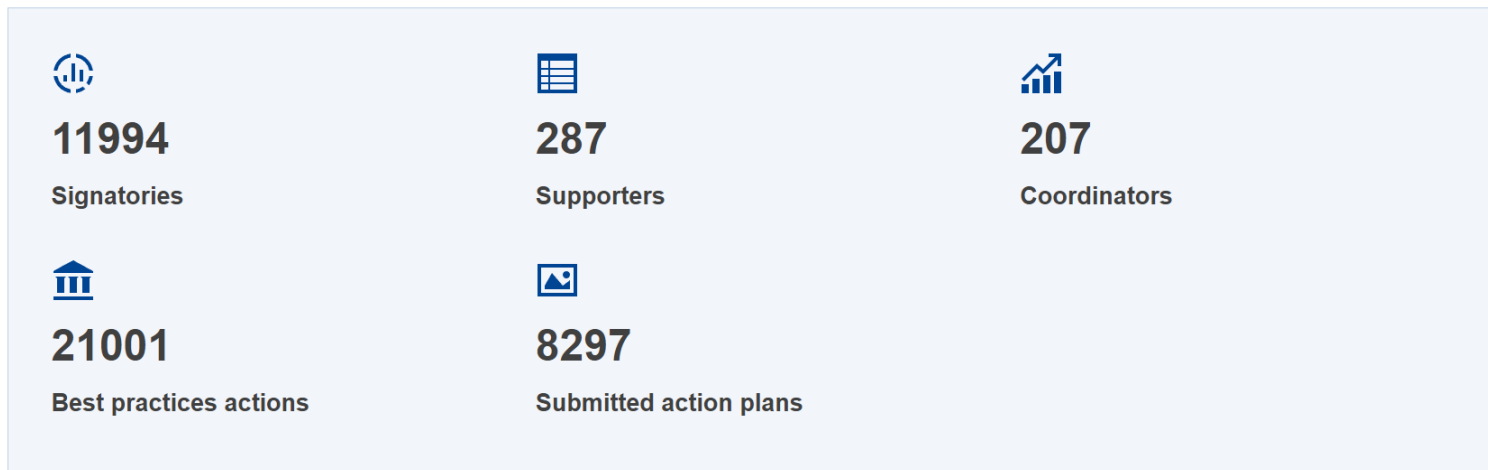
It is an ambitious voluntary initiative involving local authorities in the development and implementation of sustainable energy and climate policies

Commits local authorities to 3 **Pillar**:

- Reducing greenhouse gas emissions by 55% by 2030 (**Mitigation**),
- Strengthening resilience (**Adaptation**),
- Reducing energy poverty (**Energy Poverty**).



Covenant of Mayors: key figures in EU and Italy



Numbers include EU-27 countries and their signatories, coordinators and supporters

Italy

- Signatories: 5229 (44%)
- Published SECAPs: 3774 (46%)
- Supporters: 73 (25%)
- Coordinators: 72 (35%)

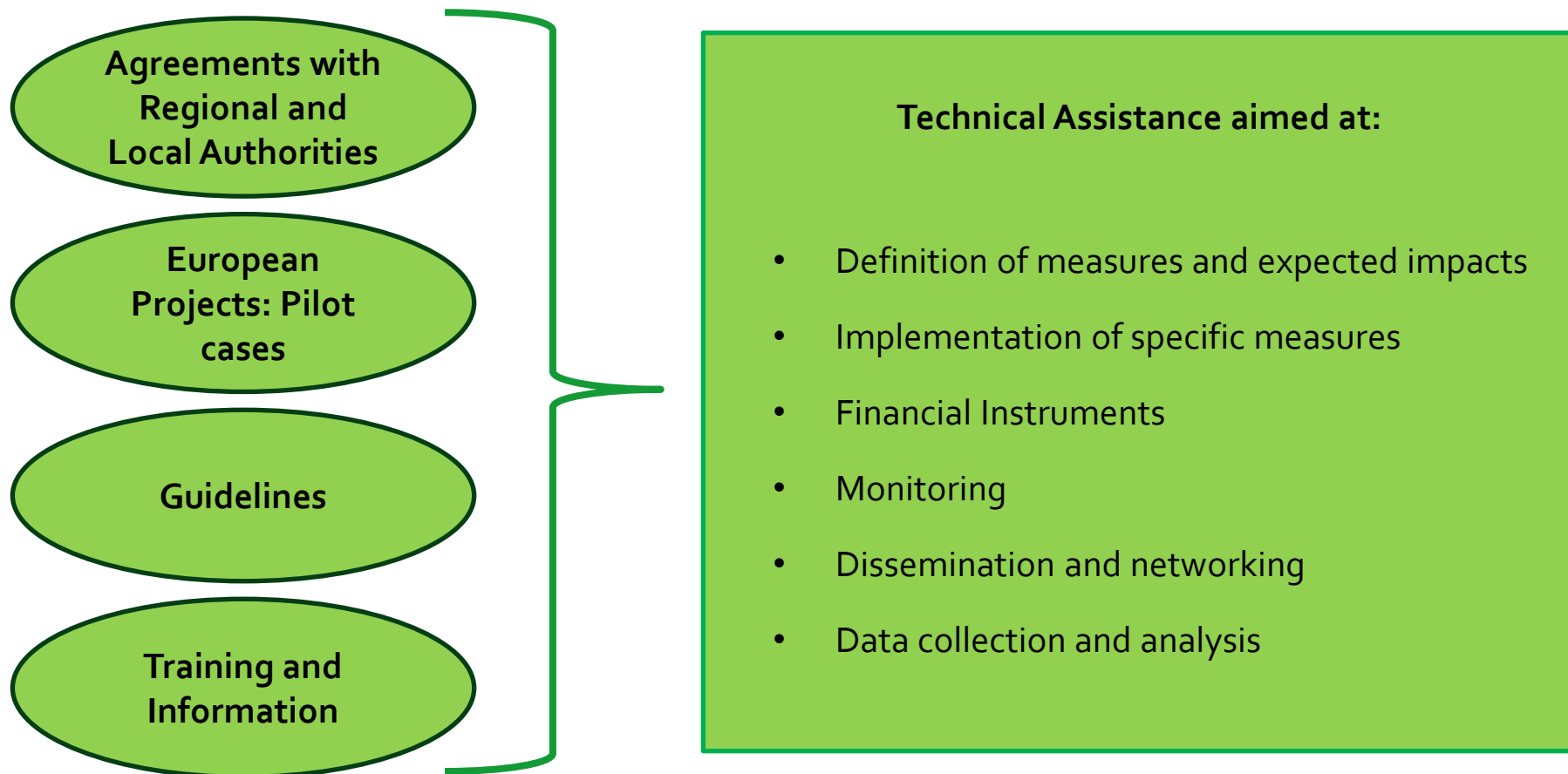


Italian National Coordinator

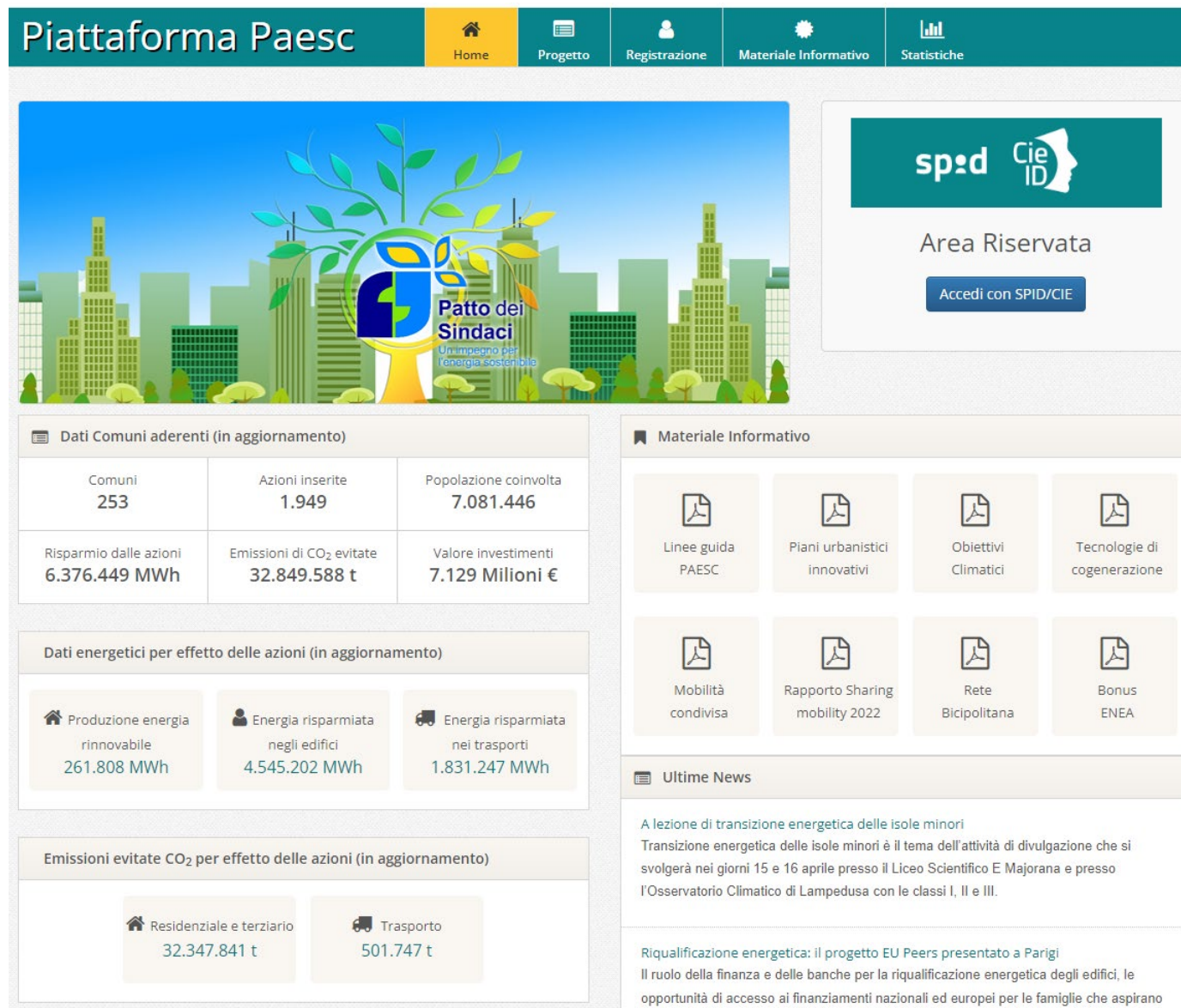
Source: <https://eu-mayors.ec.europa.eu/en/home>

Update: April 2024

Italian national Coordination Board of CoM



PAESC Platform homepage




The screenshot shows the PAESC Platform homepage. At the top, there is a navigation bar with the title 'Piattaforma Paesc' and several menu items: Home, Progetto, Registrazione, Materiale Informativo, and Statistiche. Below the navigation bar is a large banner featuring a stylized tree with green leaves and a blue and yellow logo, with the text 'Patto dei Sindaci' and 'Un impegno per l'energia sostenibile'. To the right of the banner is a login section for 'Area Riservata' with a button 'Accedi con SPID/CIE'. The main content area is divided into several sections:

- Dati Comuni aderenti (in aggiornamento)**: A table showing key statistics.

Comuni 253	Azioni inserite 1.949	Popolazione coinvolta 7.081.446
Risparmio dalle azioni 6.376.449 MWh	Emissioni di CO ₂ evitate 32.849.588 t	Valore investimenti 7.129 Milioni €
- Dati energetici per effetto delle azioni (in aggiornamento)**: Three cards showing energy savings:
 - Produzione energia rinnovabile: 261.808 MWh
 - Energia risparmiata negli edifici: 4.545.202 MWh
 - Energia risparmiata nei trasporti: 1.831.247 MWh
- Emissioni evitate CO₂ per effetto delle azioni (in aggiornamento)**: Two cards showing CO₂ savings:
 - Residenziale e terziario: 32.347.841 t
 - Trasporto: 501.747 t
- Materiale Informativo**: A grid of document icons for various topics:
 - Linee guida PAESC
 - Piani urbanistici innovativi
 - Obiettivi Climatici
 - Tecnologie di cogenerazione
 - Mobilità condivisa
 - Rapporto Sharing mobility 2022
 - Rete Bicipolitana
 - Bonus ENEA
- Ultime News**: A news section with a headline 'A lezione di transizione energetica delle isole minori' and a brief description of an event on April 15 and 16 at the Liceo Scientifico E Majorana and the Osservatorio Climatico di Lampedusa.

<https://www.paesc-sicilia.enea.it/>

Municipality dashboard



Comune di Latronico

Impianti FER

Visualizza e abilita le proposte

[Lista](#)

Informazioni del comune

Informazioni relative al comune e riferimenti utili

[Modifica](#)

Consumi

Inserisci, modifica i consumi comunali e genera l'inventario delle emissioni

[Gestisci](#)

Buone pratiche

Visualizza e gestisci le buone pratiche

[Accedi](#)

Azioni

Crea e gestisci le azioni comunali

[Gestisci](#)

Inventario delle Emissioni di CO₂


Per generare l'inventario delle emissioni di CO₂, è necessario inserire e salvare i dati relativi ai consumi diretti del Comune

[Genera IBE](#)


Dati di riferimento (2020)

Abitanti 4.462	Sup. residenz. (m ²) 191.887	Sup. terziario (m ²) 51.377
--------------------------	--	---

Anagrafica

Logo: Nessun file selezionato  [Salva](#)

Indicatori del Comune (Codice Istat: 082006)			
Area geografica	Altezza m.s.l.m.	Gradi giorno	Zona Climatica
Mezzogiorno	78 m	874	B
Fascia solare	Zona sismica	Dimensione PAES	Rurale
5	2	M	C
Urbanizzazione	Litoraneo	Caosiuolo	Isolano
Elevato	Si	No	No

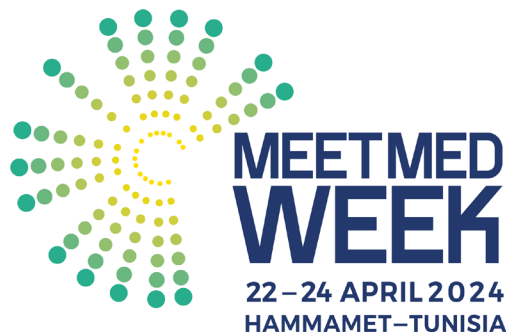


Ulteriori dati del Comune

Contact us!



Mitigation Enabling Energy Transition in the MEDiterranean region
Together We Switch to Clean Energy



MEETMED WEEK 2024

Third Edition - Tunisia

**For any inquires or comments, please
don't hesitate to contact us**

Name: Alessandro Federici

Email: alessandro.federici@enea.it

Organization: ENEA



www.meetmed.org



meetMED Project



meetmed1



meetMED



This project is funded
by the European Union